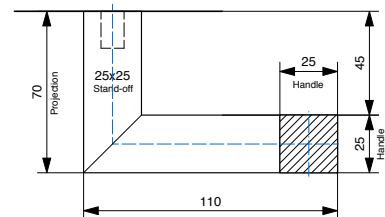
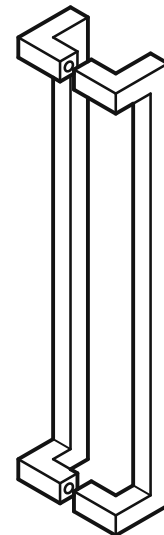


DDA Compliant - 316 Marine Grade Stainless Steel

CODE	SECTION	PROJECTION	LENGTH	CTC
BAH-155/A	25 32	70 77	325 332	300
BAH-155/B	25 32	70 77	475 482	450
BAH-155/C	25 32	70 77	625 632	600
BAH-155/D	25 32	70 77	725 732	700
BAH-155/E	25 32	70 77	825 832	800
BAH-155/F	25 32	70 77	925 932	900
BAH-155/G	25 32	70 77	1025 1032	1000
BAH-155/H	25 32	70 77	1125 1132	1100
BAH-155/I	25 32	70 77	1225 1232	1200
BAH-155/J	25 32	70 77	1325 1332	1300
BAH-155/K	25 32	70 77	1425 1432	1400
BAH-155/L	25 32	70 77	1525 1532	1500
BAH-155/M	25 32	70 77	1625 1632	1600
BAH-155/N	25 32	70 77	1725 1732	1700
BAH-155/O	25 32	70 77	1825 1832	1800
BAH-155/P	25 32	70 77	1925 1932	1900
BAH-155/Q	25 32	70 77	2025 2032	2000
BAH-155/R	25 32	70 77	2125 2132	2100
BAH-155/S	25 32	70 77	2225 2232	2200
BAH-155/T	25 32	70 77	2325 2332	2300
BAH-155/U	25 32	70 77	2425 2432	2400

• Special sizes available upon request

FINISHES	
Standard:	SSS/PSS
Options:	Powdercoat Dulux
Electroplate:	SBN ORB BN CO

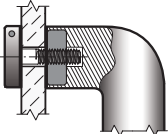


How to specify

	PRODUCT CODE	LENGTH	FINISH	FIXING	DOOR TYPE
Example:	BAH-155/A	325mm	SSS	B	GD

D = DISK FIX

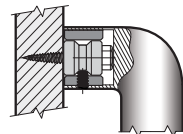
Disk fixed - Single



For Solid or Tube Handles

C = CONCEALED FIX

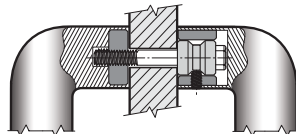
Coach Bolt fixed - Single



For Solid or Tube Handles

B = BACK to BACK FIX

Back to Back fixed - Pair



For Solid or Tube Handles

PLEASE SPECIFY THE DOOR TYPE

GD: Glass

TM: Timber

AL: Aluminium